

# SmartCam



Autonomous virtual expert detecting visual events and alerting when necessary

[www.isl.eu](http://www.isl.eu)

SmartCam is much more than a simple camera. It makes situational awareness much easier!

Powered by its artificial intelligence core, SmartCam reacts to events “close to” those it has learnt to recognize through an intuitive learning process.

SmartCam is adaptable to most situations: outdoor, urban or natural environments.

SmartCam can **detect**, **recognize** and **identify** in real time specific or abnormal visual events such as:

- intrusion of persons into restricted areas (e.g. railway protection) **1**
- movement of suspicious vehicles (e.g. bus, car, tank). **2**

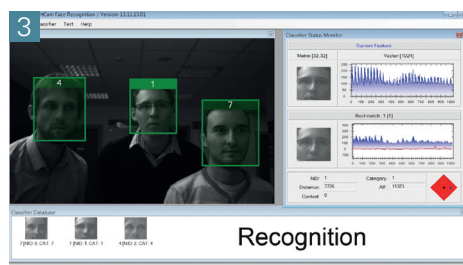
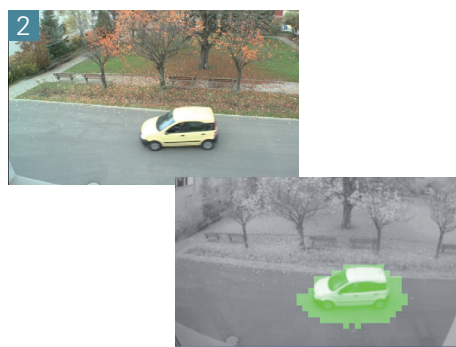
SmartCam can **track and analyze various events** in parallel:

- flying objects such as UAVs
- moving persons and vehicles.

SmartCam can **detect, recognize, identify** and **track** human faces. **3**

SmartCam sends only short **encrypted warning messages, when necessary.**

Let SmartCam monitor your environment and report only valuable information!



## Technical features

- SmartCam embeds an on chip “core” acting in real-time by using artificial intelligence – a result of ISL research activities
- A modular imaging device with optional daughter boards for additional sensors, interfaces, communication and localization modules
- Low-energy consumption: ~ 3 W
- Dimensions: 55 x 55 x 10 mm<sup>3</sup>.

## Applications

- Threat detection, recognition and identification
- Area surveillance.

## Advantages

- **Unobtrusive and miniaturized**
- Can be **deployed close to hazardous areas** (if a SmartCam is captured, its technology prevents adverse forces from accessing its catalogue of monitored events)
- **Very long autonomous runtime**
- **Low-cost and modular.**



ISL – French-German Research Institute of Saint-Louis

5 rue du Général Cassagnou • 68301 Saint-Louis • France